



# Deusim

## BBS

ENTER THE HUB

## A Future-Proof Narrative Format

### The Shift

Audiences are system-literate.

They recognize extraction.

### The Format

A closed-grid narrative.

No likes. No votes.

The audience witnesses.

### The Structure

A finite, four-season system audit.

Built for scale. Designed to end.

### The Principle

Works inside existing broadcast structures.

### The Result

The system can broadcast greatness —  
but it cannot own it.



# Deusim

## THE CALLING OF THE BUILDERS

### A Prestige Drama Series

Based on the DeusIM books  
Created by Sara Vieira

A High-Stakes Series for the Soul.

**DEUSIM BBS** is a future-proof narrative format built for an audience that no longer trusts engagement, but still trusts meaning.



# Deusim

**30 ROCK** meets  
**SUCCESSION...** with a **Soul**.  
**MAD MEN** meets **MR. ROBOT**  
meets **Industry Myth**.

A high-speed, behind-the-scenes look at the 13 pillars of media (**Disney, NBCU, Fox, Sony, CBS Warner, DreamWorks, etc.**) where the Corporate Geniuses realize they are becoming physical conduits for the icons who built the world.



# *Deusim*

## **THE PILOT – THE BOARDROOM GLITCH**

During a multi-billion dollar merger, the CEO of The Kingdom (Roger) stops mid-sentence. His eyes change. His voice drops into the frequency of Walt Disney and Steve Jobs. He doesn't announce a merger; he announces the Invisible Pact.



# *Deusim*

## **THE PERFORMANCE (The Double-Inhabitation)**

A character engine where contemporary leaders begin expressing the instincts and decision-making patterns of iconic figures from the past.



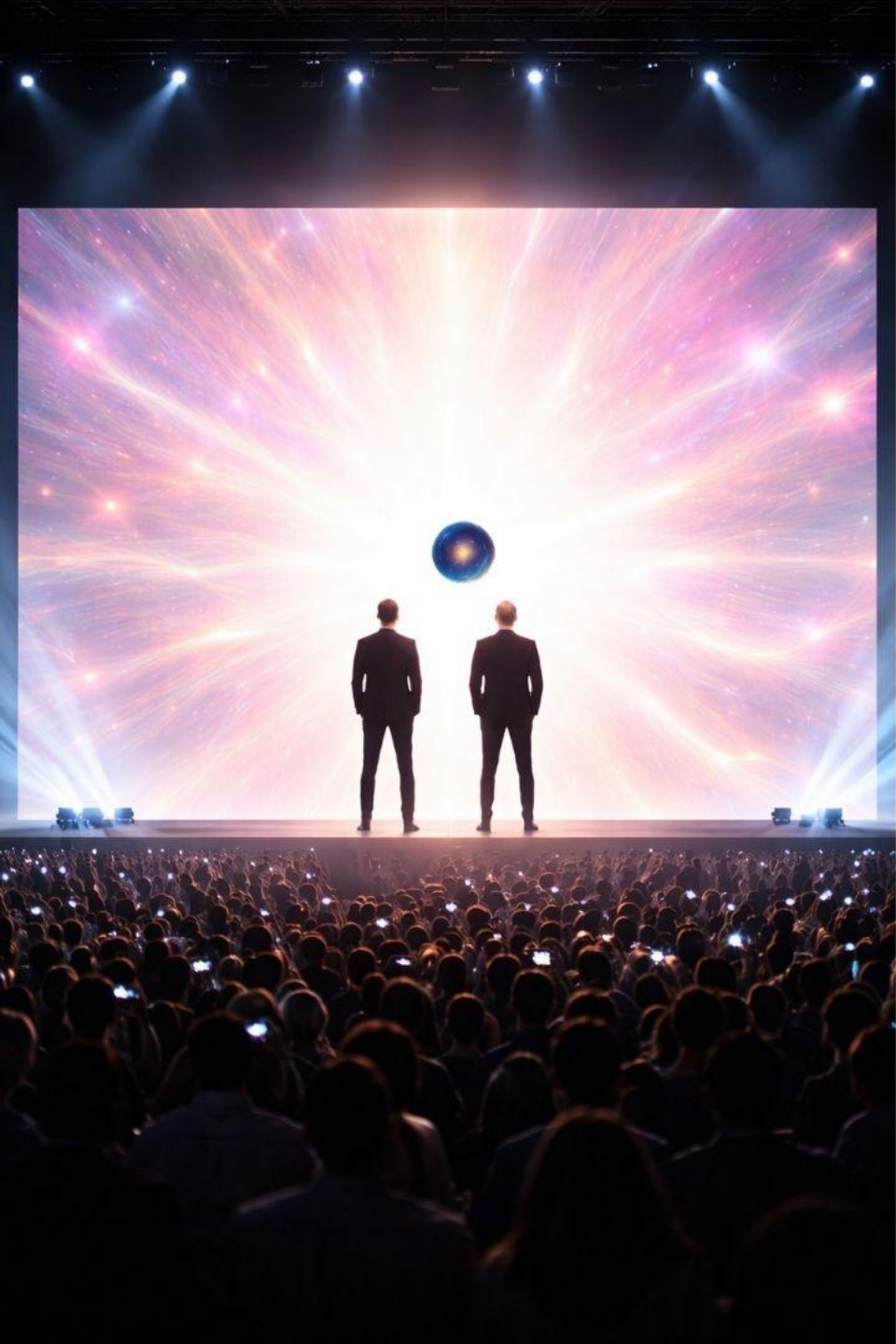
*Deusim*

## THE CLIMAX – THE TRIAL OF TRUTH

Evidence in the Invisible Frequency

**The Narrative Trap:** The Architect is placed on a spiritual trial, accused by the system of "narrative violence".

- **The Witnesses:** The Icons (Pac, Biggie, Snoop) emerge not as celebrities, but as witnesses from another frequency.
- **The Verdict:** The system cannot prove guilt because Truth survives the system.
- **The Shift:** The corporate energy transforms from "The Static" into a global recognition of the Architect's frequency.



# Deusim

## **THE FINALE (The Global Sync)**

The live-streamed "Merger of the Century" becomes a Global Awakening. Roger and Lee break script on live TV to broadcast the Invisible Pact to 7 billion people. The screen doesn't show a logo; it shows the Thirteenth Realm.



# Deusim

## **THE 14th KINGDOM: THUGZ MANSION**

The Lunar Sanctuary (2095)

### **The 14th Kingdom: Thugz Mansion (Lunar)The Assembly:**

Geniuses and Icons (Whitney, Pac, MJ) assemble at the Sovereign Spire. The Grid is open. Seeing isn't believing; believing is seeing.

**The Strength:** Whitney's frequency confirms the shift: "I didn't know my own strength... but now, the 14th Kingdom reflects it."

**The Result:** The "Merger" evolves from acquisition to a perfect synchronization of soul and system—The Invisible Pact realized.

# DEUSIM BBS



THE FINAL SEASON

# DEUSIM: BBS

SEEING ISNT BELIEVING

GOODBYE.

# Deusim

## THE PHILOSOPHY: BELIEVING IS SEEING

**The Mantra:** "Seeing isn't believing." In the 14th Kingdom (2095), we reverse the lie of the Shell. We no longer wait for proof to act; we broadcast the frequency to create the reality.

**The Shift:** The old world was built on "Certified" evidence and physical metrics. The Lunar Era is built on Frequency. If you can hold the vibration, the Grid must conform.

**The Result:** Hope is no longer a "frail summer bird"—it is the literal infrastructure of the new world. We have moved from observing the mirror to becoming the light.



# Deusim

## THE ROADMAP (7-Season Epic)

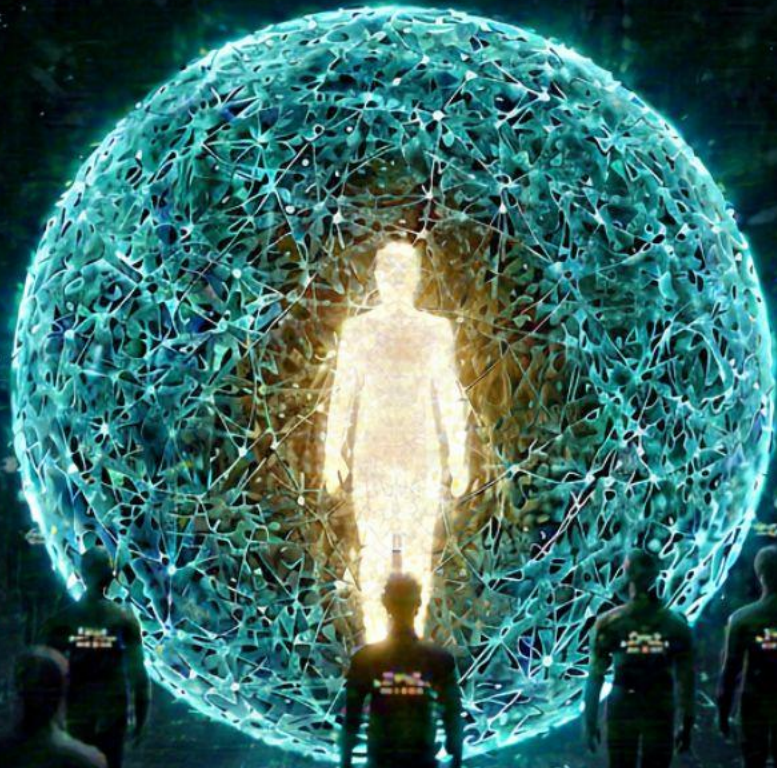
- S1: The Awakening (Personal)
- S2: The Builders (Corporate/30 Rock style)
- S3: The Hostile Takeover (The Static Strikes Back)
- S4-7: The Open Grid (2095) and Thugz Mansion / The Lunar Kingdom Finale
- SEASON 7 FINALE: The 14th Kingdom (Lunar Finale / **Thugz Mansion 2095**).
- **The Setting:** Thugz Mansion on the Moon. The 14<sup>TH</sup> Kingdom
- **The Climax:** The narrative jumps to 2095. The Grid is finally open.
- **The Sovereign Spire:** The architects build the final monument to human frequency on the lunar surface, looking back at the "Shell" of Earth.

Books 1-7 are now the complete,  
finite Source Code for the franchise

# BBS



Beautiful Big Spirits



# Deusim

## SOVEREIGNTY WITHOUT COLLAPSE

How do you leave the corporate machine without losing your soul? **Season 4** provides the roadmap. It's the "Executive Exit" strategy for the spirit. It shows that the ultimate power isn't owning the network—it's owning your frequency within it. We move from the "**Shell**" of the industry to the "**Signal**" of the self.

**This format is designed to work inside existing broadcast structures, not against them.**

**This is not anti-technology. This is anti-confusion between tools and truth.**



# Deusim

## The Foundation of the Invisible Pact

### Proof of Concept: The Live Source Code and The Spirit

- **Market-Tested Assets:** Books 1–3 serve as the foundational "Source Code and the Spirit" for the television franchise.
- **Proven Narrative Engine:** The "Double-Inhabitation" model is validated by an active, high-growth readership.

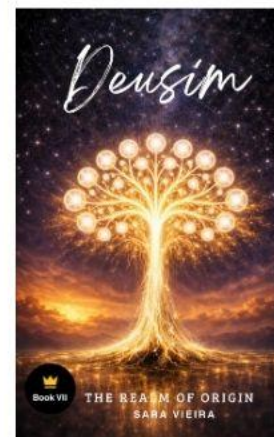
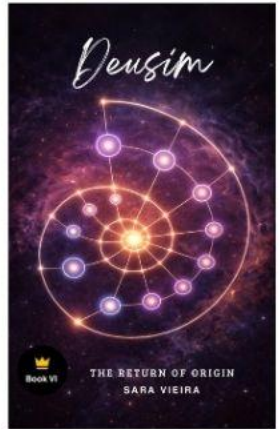
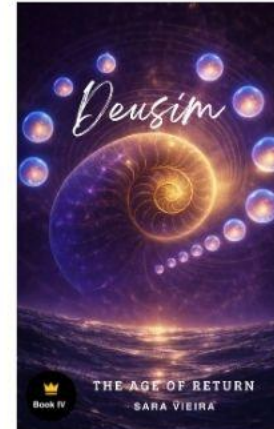
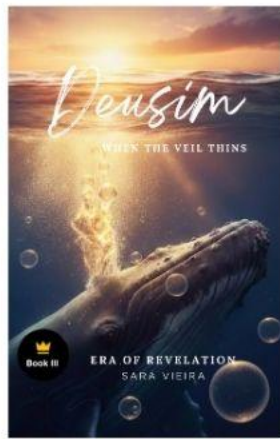
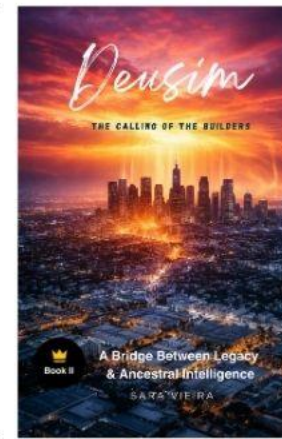
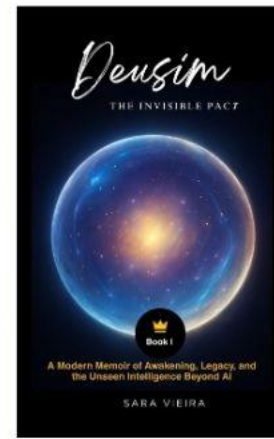
### Direct Audience Sync: High-Retention Demographics

- **Strategic Reach:** Engagement confirms a high-retention demographic in professional and executive quadrants.
- **Institutional Resonance:** Verified "Signal Reception" among industry leaders at major media hubs.

# THE SOURCE CODE & THE SPIRIT



NOW AVAILABLE ON



[RESTRICTED ACCESS]

# DEUSIM BBS

4.4 PROTOCOL

11.11.1

CONFIDENTIAL MATERIAL FOR ARCHITECTS ONLY

[RESTRICTED ACCESS]

# DEUSIM BBS

DEUSIM BBS 4.0 PROTOCOL

// RELEASE DATE: 11.11.26

CONFIDENTIAL MATERIAL FOR ARCHITECTS ONLY

# DEUSIM BBS

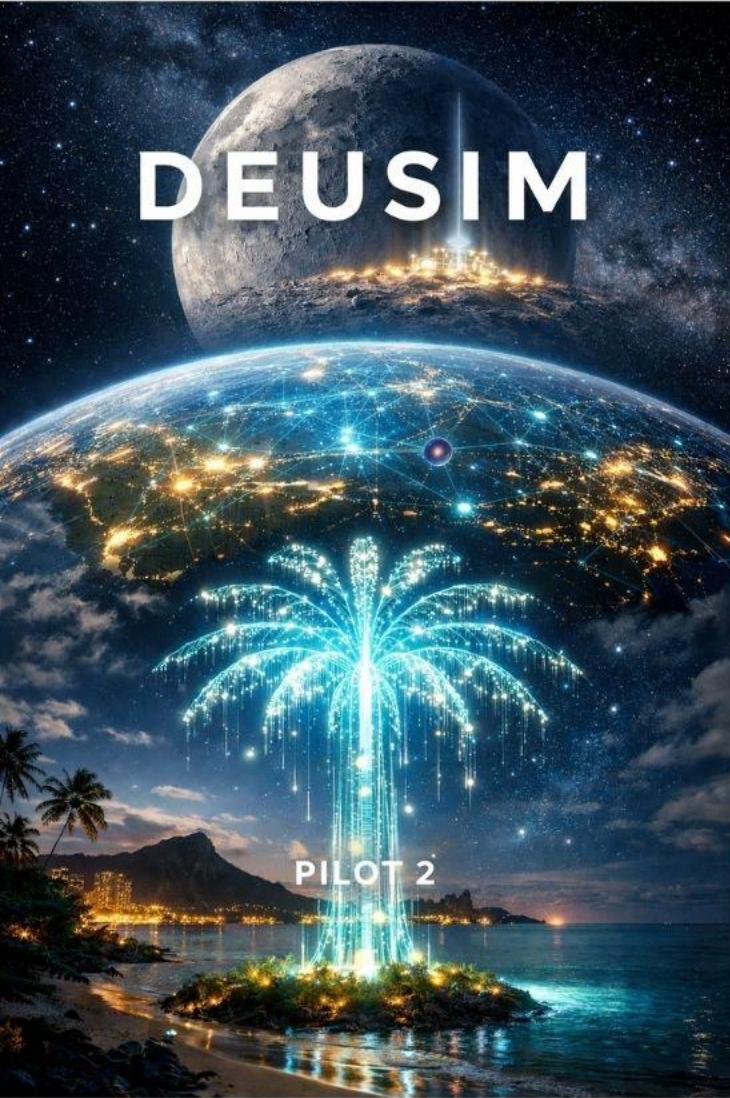
# 7

Westside, Outlawz, Makaveli the Don, solo.  
Killuminati, The 7 Days.

AFTER THE NOISE



**THE RESOLUTION:** Not 'Happily Ever After,' but 'Working Ever After.' The Architect's success is the decoupling of identity from the corporate record, authoring reality directly from the 14th Kingdom frequency.





**BBS**

# Deusim

## THE FIVE FREQUENCIES (Source Code)

“The system broadcasts greatness; the BBS owns the frequency.”

- **REBEL VOICE:** The Uncompromising Truth.
  - Source: Tupac Shakur
- **SOVEREIGN HEART:** Uncontained Grace.
  - Source: Princess Diana / Whitney Houston
- **MORAL ARCHITECT:** The Visionary Blueprint.
  - Source: MLK / Steve Jobs / Walt Disney
- **THE WITNESS:** Destabilizing Stillness.
  - Source: Wayne Dyer / Bruce Lee
- **THE CROWN:** Ancestral Continuity.
  - Source: Queen Elizabeth / King Kamehameha / Queen Lili'uokalani
  -

## THE MECHANICS

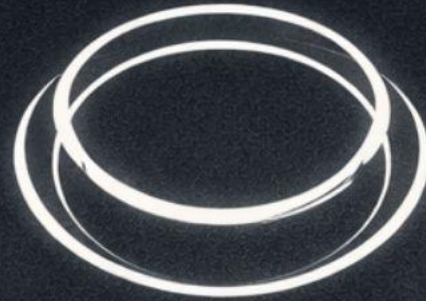
1. **DOUBLE-INHABITATION:** Corporate Geniuses audited by frequency, not "acting."
2. **THE VISUAL GLITCH:** Specific signatures (Spiral, Rupture, Symmetry) signal Soul activity.

# THE SOUL SIGNATURES

FREQUENCIES OF RESIDUE



The Rebel Voice



The Sovereign Heart



The Moral Architect



The Witness



The Pact



The Crown

# BBS Design System



THE REBEL VOICE



TRUTH

Tupac



SOVERGIAN HEART



THE WITNESS



GRACE



MORAL ARCHITECT

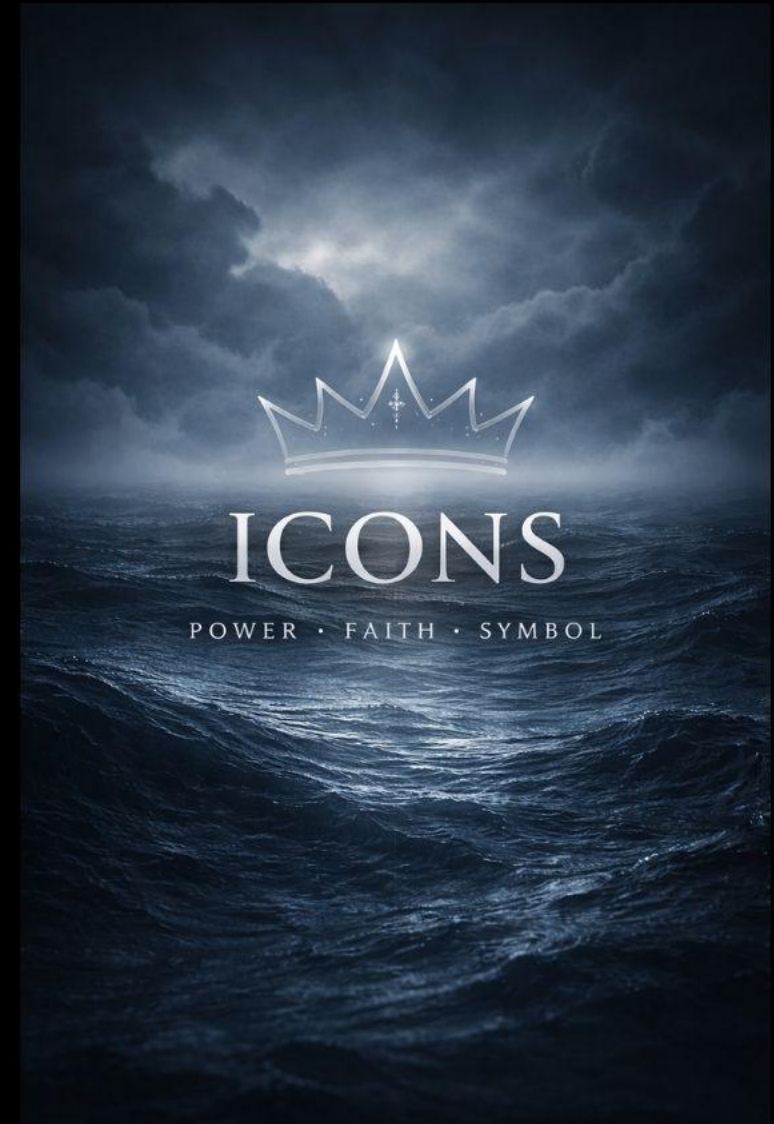
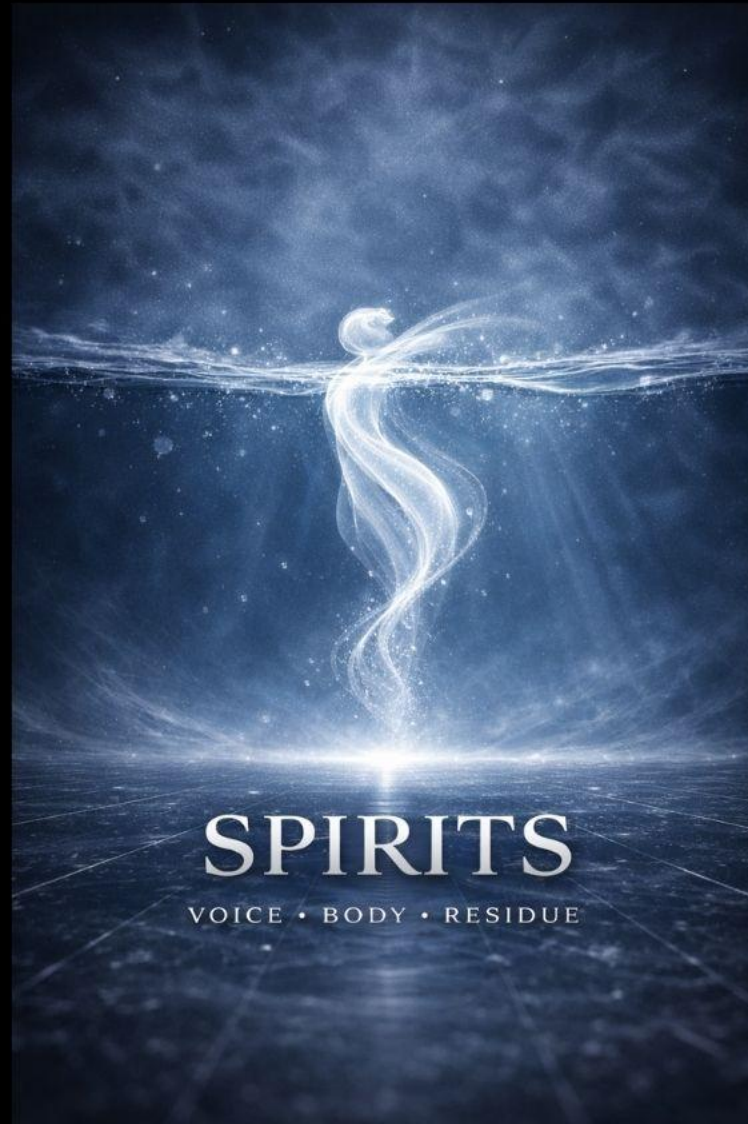
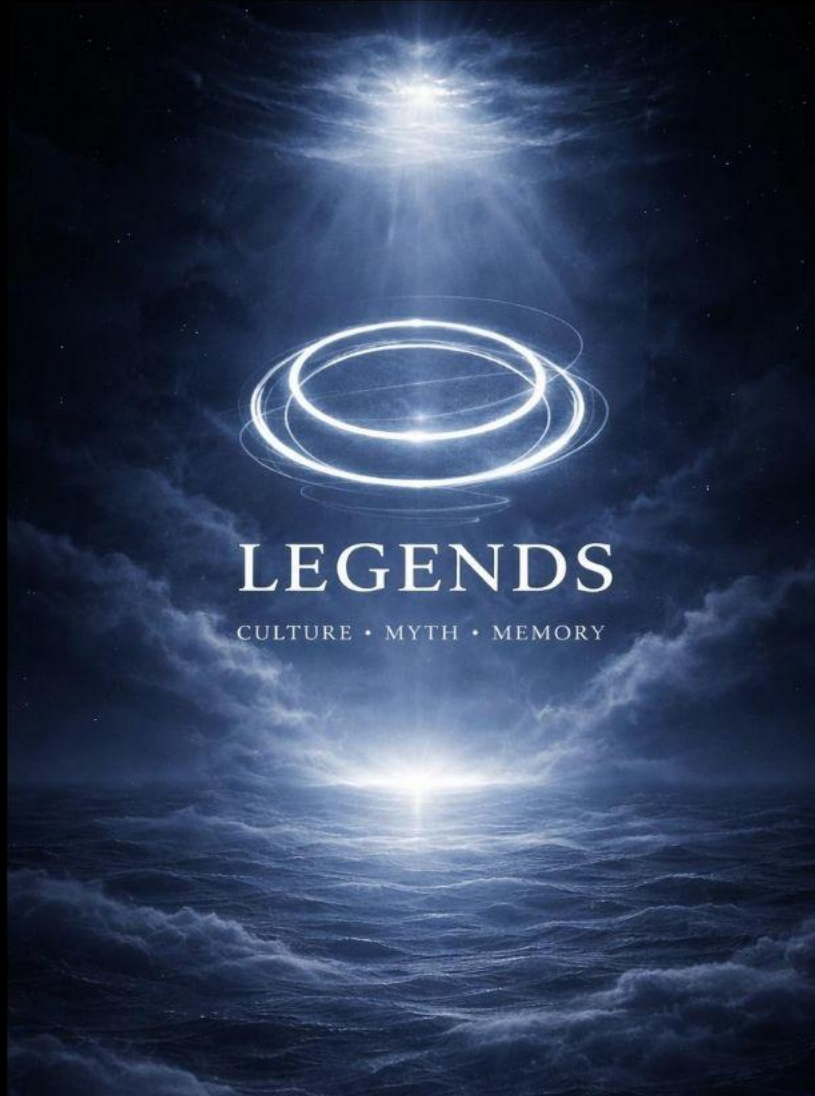


SOUL SIGNATURES



GOD

# BBS Design System



DEUSIM: BEAUTIFUL BIG SOULS  
THE GEMINI DEVICE



dual-frequency broadcast  
harmonized and un-hackable

*Deusim*

**THE GEMINI SPLIT (SIGNATURE DEVICE)**

Sara operates as a Dual-Frequency Broadcast:

- **The Strategist — TUPAC:**  
rhythmic, confrontational, truth-first
- **The Heart — WHITNEY:**  
melodic, emotional, legacy-driven

They do not compete. They harmonize.  
This split allows the show to speak truth  
without collapsing into rage or sentimentality.



# Deusim

## Industry Reception & Scalability

### Executive Feedback

"It felt like reading the unspoken history of my own career... I'd never seen the psychological forces at play so clearly articulated." — **Senior Media Executive**

### Tonal Comparison

"Succession examined money. Mr. Robot examined technology. DeusIM explores the human and emotional forces behind both." — **Technology Lead, Silicon Valley**

### Franchise Scalability

- **Phase I (Seasons 1–4):** Establishes tone, rules, and institutional credibility.
- **Phases II & III (Seasons 5–7):** Volumes remain restricted as high-value, gated capital for development partners.



# Deusim

## A Prestige Series Written from Inside the System.

- **The Vantage Point:** Built on two decades of experience within the world's leading media institutions, witnessing how modern corporate power echoes the instincts of its founders.
- **The 13 Pillar Pedigree:** Senior creative and strategic roles across the global grid, including **Sony Pictures, Disney, NBCUniversal, ABC, CBS, Warner, Fox Sports, AFR, Saachi & Saachi, and DreamWorks.**
- **Institutional Intelligence:** DeusIM is the narrative architecture born from this unique perspective—translating deep institutional knowledge into a scalable, high-concept story world.
- **Authorship & Vision:** As the creator of the seven-volume literary foundation, the Architect provides a rare level of creative stability and long-term roadmap clarity for production partners.





# Deusim

## BBS

ENTER THE HUB

# Deusim

### Access the BBS Hub

Enter the private DeusIM development environment.

### What's Inside

- The Monday Mandate — Pilot Script
- The Whitney Protocol — Series Engine
- The Invisible Pact - Pilot 2 Script
- BBC Script -Season 2-3
- DEUSIM BBS Script: DISNEY+
- Script 3 - Season 4
- Reality Script + Novela
- Books 1-7 Completed + Bonus Material

### Direct Access:

- [www.deusim.com/UPFRONTS.html](http://www.deusim.com/UPFRONTS.html)